

PRINCES GATE MEWS

SOUTH KENSINGTON
SW7


ALDERSLEY
L O N D O N

A NEWLY REFURBISHED,
DOUBLE FRONTED MEWS
HOUSE, PRIMELY
LOCATED IN THE HEART
OF SOUTH
KENSINGTON





THE RESIDENCE

Enjoying expansive modern living, this elegant double fronted mews house has been exceptionally renovated throughout.

Set across four floors, the residence boasts a wealth of space including three double bedrooms each with en suite bathrooms, an additional bathroom, a reception room and a generous kitchen/dining room.

Moments from Brompton Road's enviable shops and restaurants, the property also enjoys close proximity to nearby Hyde Park.

SPECIFICATION

- Principal bedroom
- Two additional double bedrooms
- Four bathrooms
- Immaculately refurbished
- Quiet and picturesque London Mews
- High ceilings
- Abundance of natural light
- Garage
- Air conditioning
- Moments from Brompton Road
- Short walk to Hyde Park
- 2,936 sq ft







PRINCES GATE MEWS

SOUTH KENSINGTON SW7







PRINCES GATE MEWS
SOUTH KENSINGTON SW7







**KENSINGTON
GARDENS**

HYDE PARK

KNIGHTSBRIDGE

**PRINCES
GATE MEWS**

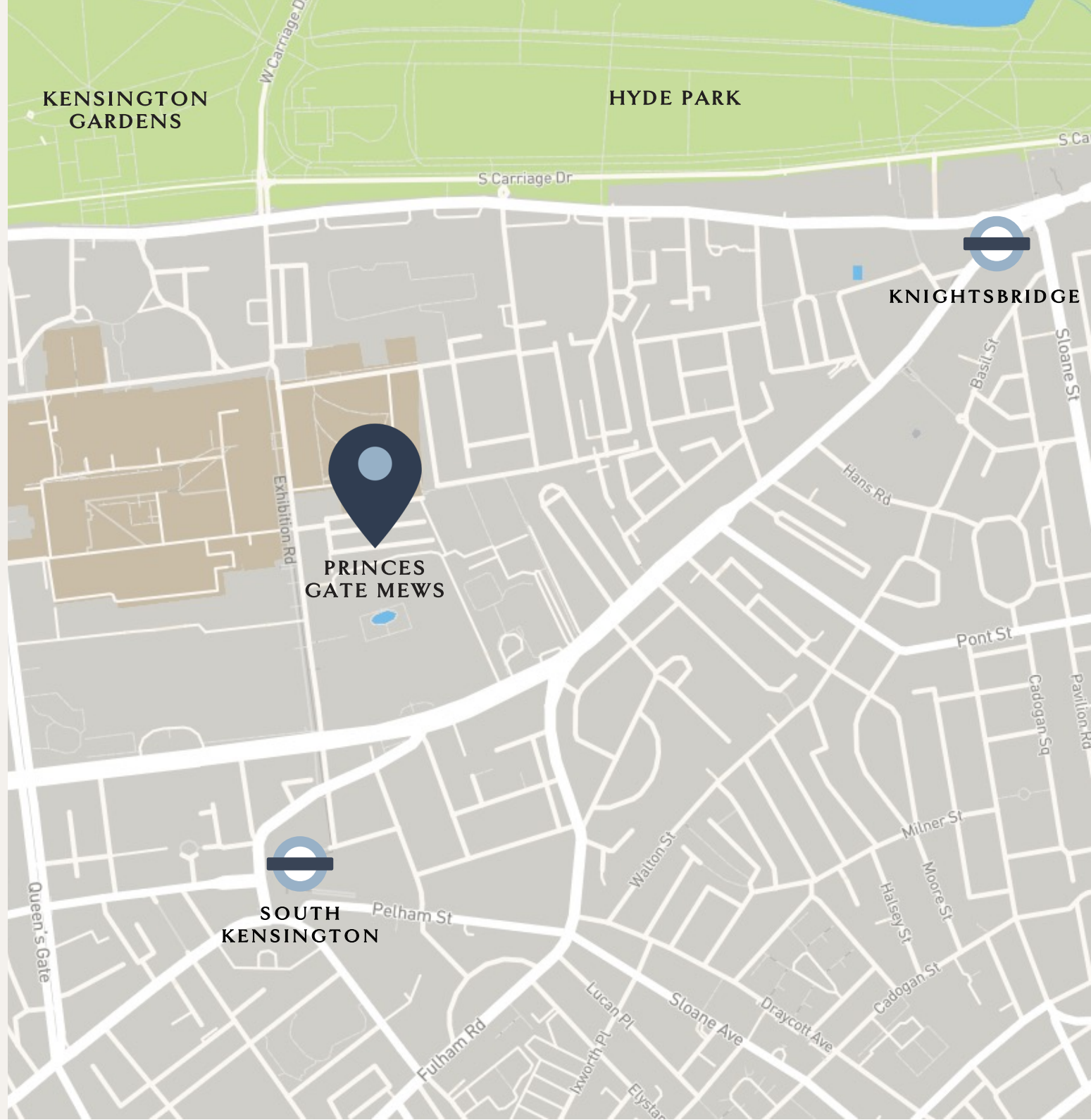
**SOUTH
KENSINGTON**

LOCATION

Prominently positioned within a plethora of some of central London's best cultural, retail and leisure pursuits, Princes Gate Mews is primely situated within close walking distance of Hyde Park and Kensington Gardens.

 South Kensington | 0.4 miles (8 min walk)

 Knightsbridge | 0.8 miles (17 min walk)



SCIENCE MUSEUM

3 minute walk



NATURAL HISTORY MUSEUM

4 minute walk



HYDE PARK

8 minute walk



HARRODS

13 minute walk



FURTHER DETAILS

Asking price: £5,950,000

Local Authority: Kensington & Chelsea

Tenure: Freehold

Council Tax Band – H

EPC rating – B

Enquiries

+44 (0) 207 659 4425

Score	Energy rating	Current	Potential
92+	A		
81-91	B	81 B	85 B
69-80	C		
55-68	D		
39-54	E		
21-38	F		
1-20	G		

Princes Gate Mews, SW7

Approximate gross internal area

272.75 sq m / 2936 sq ft

(Including Garage)

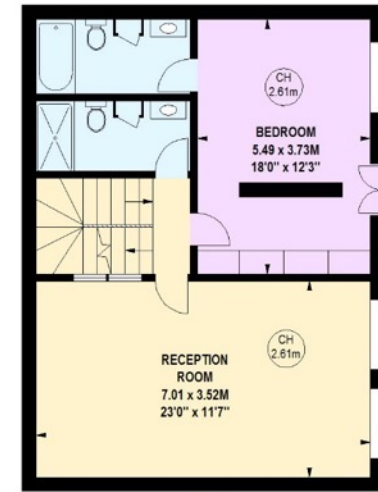
Garage

15.33 sq m / 165 sq ft

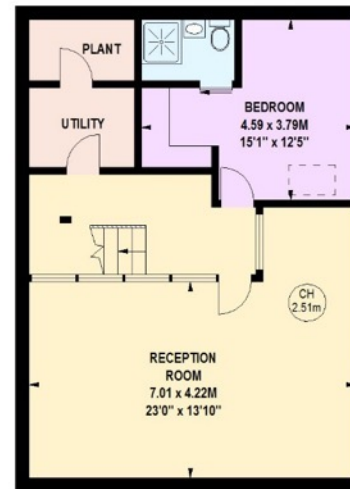
Key :
CH - Ceiling Height



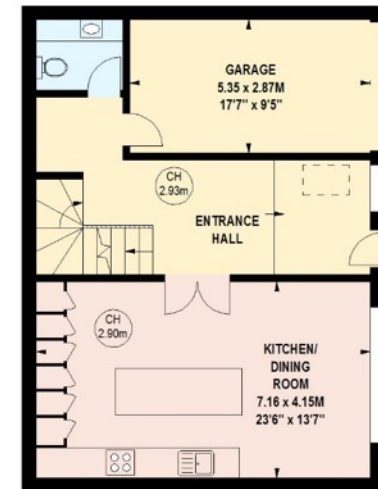
670 sq ft
Second Floor



762 sq ft
First Floor



744 sq ft
Lower Ground Floor



760 sq ft
Ground Floor

Although every attempt has been made to ensure accuracy, all measurements are approximate.
This floorplan is for illustrative purposes only and not to scale.
Measured in accordance with RICS Standards. © Outline.

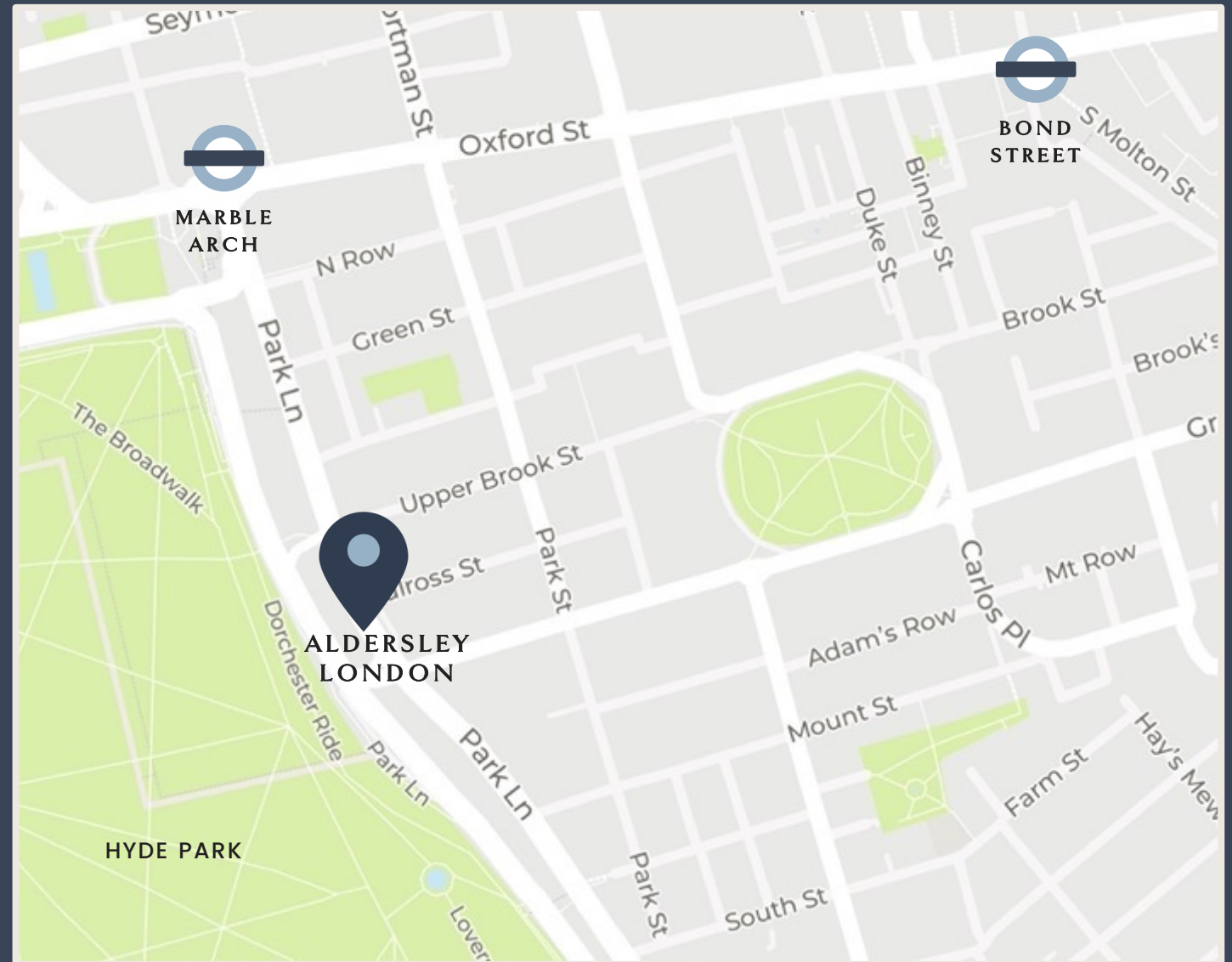
IMPORTANT NOTICE: Aldersley London Ltd gives notice that: 1. These particulars do not constitute an offer or contract or part thereof. 2. All descriptions, photographs and floor plans are for guidance only and should not be relied upon as statements or representations of fact. All measurements are approximate and not necessarily to scale. Any prospective purchaser must satisfy themselves of the correctness of the information within the particulars by inspection or otherwise. 3. Aldersley London Ltd does not have any authority to give any representations or warranties whatsoever in relation to this property (including but not limited to planning/building regulations), nor can it enter into any contract on behalf of the Vendor. 4. Aldersley London Ltd does not accept responsibility for any expenses incurred by prospective purchasers in inspecting properties which have been sold or withdrawn. 5. Although we make reasonable efforts to update our information, neither Aldersley London Ltd nor anyone in its employment or acting on its behalf makes any representations, warranties or guarantees, whether express or implied, in relation to the property, or the content in these particulars is accurate, complete or up to date. If you require further information please contact us.

ABOUT US

With over 20 years' experience in the prime central London property market, Aldersley London provides a wide range of bespoke services to its clients, including property sales, search agency, acquisitions and residential development.

Based in the heart of Mayfair on Park Lane, we tailor all our services to suit our clients' specific requirements. Whether you require help selling a property, finding a new property for you as an individual, company or a family, or are looking to invest in the London property market for a long-term view or for an exciting development project to watch transform into something exquisite – we can do it all.

We have successfully built up a reputation for our high performance in the London property market, achieving record prices for enviable properties in some of the most desirable locations across London. Offering discretion and unrivalled industry know-how at every stage of the journey, prospective sellers and buyers also benefit from access to our private global property network.



ENQUIRE

+44 (0) 207 659 4425 | info@aldersleylondon.com | Aldersley London Ltd, 97 Park Lane, London W1K 7TG